

Rótula SI SI10-PK-DURBAL - SI10-PK-DURBAL

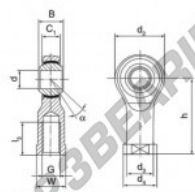
<https://www.123rolamento.pt/rolamento-mancal/rotula/si/si10-pk-durbal>

SI10-PK



female thread;
maintenance free,
according to
DIN ISO 12240-4,
series K

Description: DIN ISO rod end K series. Sliding combination steel / bronze-PTFE composite.



rod end body:
surface case plated

Sliding combination:
steel / bronze-PTFE composite

inner ring:
bearing steel hardened and ground

Outer ring:
rod end body pressed around, outer race
lined with bronze-PTFE composite

Lubrication:
maintenance free

order number	d	G	measurement (mm)				
SI 10 PK	10	M 10	14	11,00	29	15,0	19

type	measurement (mm)			alpha	load rating	weight
	l ₁	W	h	[°]	C ₀ [kN]	[kg]
SI / SI10 PK	20	17	43	12	18,00	0,077

CARACTERÍSTICAS DO PRODUTO

Marca	DURBAL
Nº Ean13	3663952491912
Diâmetro interior	10 mm
Diâmetro interior	0.394" inch
Diâmetro exterior	29 mm
Diâmetro exterior	1.142" inch
Espessura	14 mm
Espessura	0.551" inch
Tipo	SI
Peso	77 g
Linha	Rosca direita
Lubrificação	sem
Embalagem	1

contato@123rolamento.pt

CRT4 de Lesquin 60 Rue Du Haut De Sainghin 59273 Fretin FRANCE